



*Centre for the  
Study of  
Co-operatives  
(Saskatoon)*

*Community-  
University  
Institute for  
Social Research  
(Saskatoon)*

*Winnipeg Inner  
City Research  
Alliance*

*Community  
Economic and  
Social  
Development  
Program  
(Sault Ste. Marie)*

# Linking, Learning, Leveraging

## *Social Enterprises, Knowledgeable Economies, and Sustainable Communities*

- a total of \$1.745 million from SSHRC and matching in-kind funds from our partners totaling an estimated \$6.45 million, to conduct a five-year national study
- purpose — describe and measure the impact of the social economy in Saskatchewan, Manitoba, and northern Ontario; strengthen and expand existing capacity
- involves 24 academics in 10 disciplines from 12 universities, and 38 community partners from four provinces, the United States, Colombia, and Belgium



*Centre for the  
Study of  
Co-operatives  
(Saskatoon)*

*Community-  
University  
Institute for  
Social Research  
(Saskatoon)*

*Winnipeg Inner  
City Research  
Alliance*

*Community  
Economic and  
Social  
Development  
Program  
(Sault Ste. Marie)*

## Model : Social Economy Suite of Projects

- regionally-based, community-university alliances
- carry out programs of research and knowledge mobilization that are relevant to that region
- conduct new research, facilitate networking among stakeholders, and train students and community researchers
- governance model includes active partnerships between universities and community organizations
- involves researchers and/or community partners from other regions
- forms a network involving academics, students, community groups, and other interested partners
- regional nodes are linked together, via the national hub, in a “network of networks” for creating and mobilizing knowledge



*Centre for the  
Study of  
Co-operatives  
(Saskatoon)*

*Community-  
University  
Institute for  
Social Research  
(Saskatoon)*

*Winnipeg Inner  
City Research  
Alliance*

*Community  
Economic and  
Social  
Development  
Program  
(Sault Ste. Marie)*

# Linking, Learning, Leveraging

## *Social Enterprises, Knowledgeable Economies, and Sustainable Communities*

### ● Objectives

- to describe and measure the impact of the social economy in Saskatchewan, Manitoba, and northern Ontario; and to strengthen and expand existing capacity



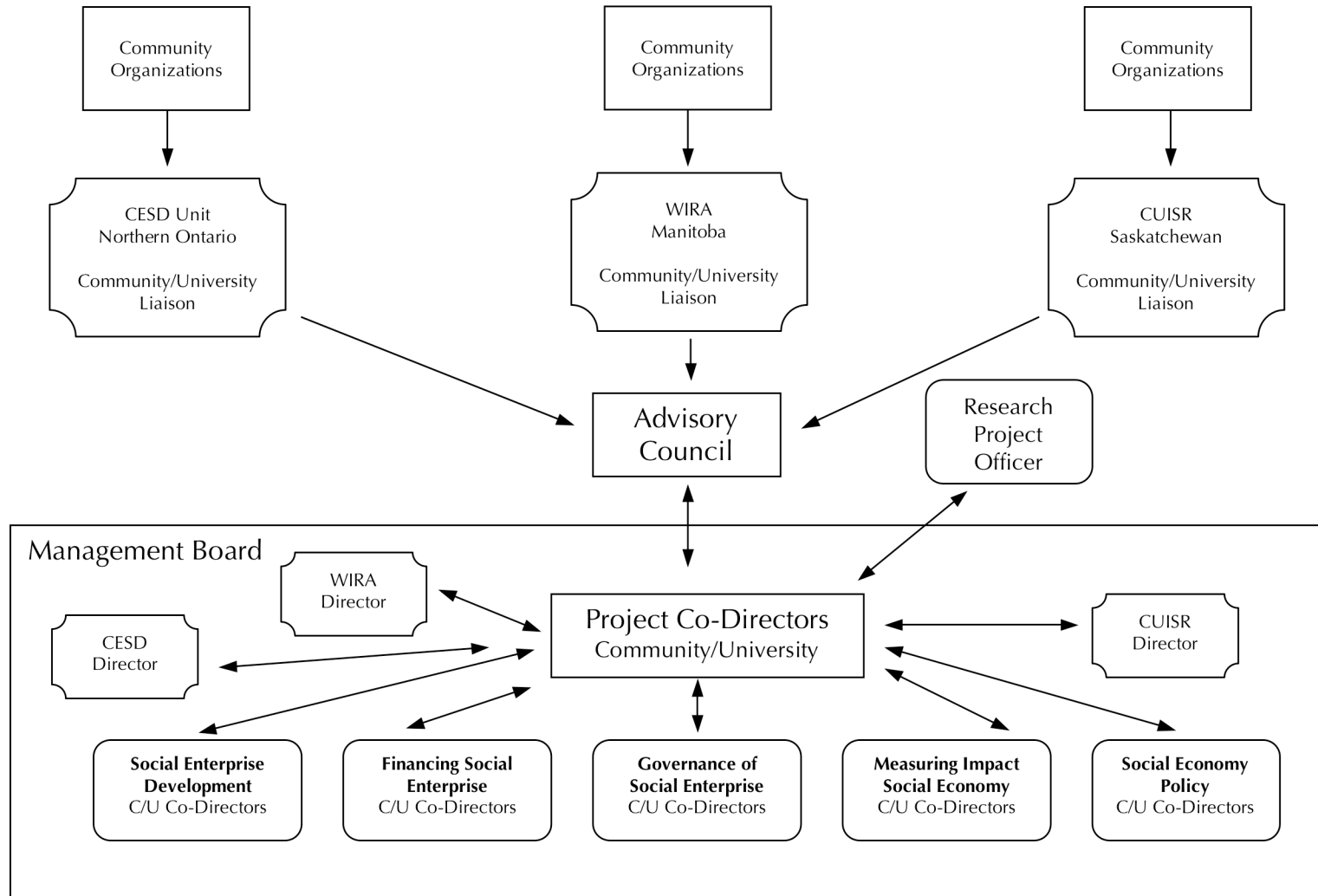
*Centre for the Study of Co-operatives (Saskatoon)*

*Community-University Institute for Social Research (Saskatoon)*

*Winnipeg Inner City Research Alliance*

*Community Economic and Social Development Program (Sault Ste. Marie)*

## Administrative and Governance Structure





*Centre for the  
Study of  
Co-operatives  
(Saskatoon)*

*Community-  
University  
Institute for  
Social Research  
(Saskatoon)*

*Winnipeg Inner  
City Research  
Alliance*

*Community  
Economic and  
Social  
Development  
Program  
(Sault Ste. Marie)*

# Administrative and Governance Structure

- distribute resources directly to community organizations through a competitive process whereby interested parties can apply for funding to pursue research agendas consistent with the direct needs of their organizations
- funds for this purpose will be distributed through
  - Saskatchewan: Community University Institute for Social Research (CUISR)
  - Manitoba: Winnipeg Inner City Research Alliance (WIRA)
  - Ontario: Community Economic and Social Development Program at Algoma University College
- each has a co-director management model in place



*Centre for the  
Study of  
Co-operatives  
(Saskatoon)*

*Community-  
University  
Institute for  
Social Research  
(Saskatoon)*

*Winnipeg Inner  
City Research  
Alliance*

*Community  
Economic and  
Social  
Development  
Program  
(Sault Ste. Marie)*

# Administrative and Governance Structure

- distribute funds on the basis of research cluster; each cluster will have an academic and community co-director, who will jointly be responsible for setting direction and monitoring the progress of the cluster



*Centre for the  
Study of  
Co-operatives  
(Saskatoon)*

*Community-  
University  
Institute for  
Social Research  
(Saskatoon)*

*Winnipeg Inner  
City Research  
Alliance*

*Community  
Economic and  
Social  
Development  
Program  
(Sault Ste. Marie)*

# Administrative and Governance Structure

- centrally administered funds for regional conferences, communication across the region, dissemination of results
- the project will be administered by the Centre for the Study of Co-operatives using in-kind staff support



*Centre for the  
Study of  
Co-operatives  
(Saskatoon)*

*Community-  
University  
Institute for  
Social Research  
(Saskatoon)*

*Winnipeg Inner  
City Research  
Alliance*

*Community  
Economic and  
Social  
Development  
Program  
(Sault Ste. Marie)*

# Mechanisms for Facilitating Research and Networking

- through the provincially-based organizations
  - for students — a total of 22 four-month graduate internships; and 38 internships that are part time for 8 months and full time for 4 months at the undergraduate and graduate levels; support for conference travel
  - for community partners — community release funds; funds for an annual local workshop; funds to support travel to the annual local workshop; funds to support travel to each of the two regional conferences
  - for the host organization — funds to support administrative/community liaison activities and supplies



*Centre for the  
Study of  
Co-operatives  
(Saskatoon)*

*Community-  
University  
Institute for  
Social Research  
(Saskatoon)*

*Winnipeg Inner  
City Research  
Alliance*

*Community  
Economic and  
Social  
Development  
Program  
(Sault Ste. Marie)*

# Mechanisms for Facilitating Research and Networking

- through the clusters
  - for students — 3 PhD and 10 MA scholarships; travel funds for field research
  - for academic partners — unmatched release allowances
  - travel funds for field research
  - for community partners — community release funds
  - for cluster administration — funds for communication and supplies



*Centre for the  
Study of  
Co-operatives  
(Saskatoon)*

*Community-  
University  
Institute for  
Social Research  
(Saskatoon)*

*Winnipeg Inner  
City Research  
Alliance*

*Community  
Economic and  
Social  
Development  
Program  
(Sault Ste. Marie)*

# Research Focus

- Cluster 1: What can we learn from social-economy enterprises about how to build more respectful relationships — with community, the environment, central organizational stakeholders; how can these learnings be shared in order to “raise the bar” within profit-seeking organizations?
- Cluster 2: What kinds of financing strategies are needed to support the development and expansion of the social economy — what models exist, how well do they function for social-economy organizations?
- Cluster 3: What are the best practices with regard to governance models — what can we learn from co-operative organizations; how can this knowledge be transferred?
- Cluster 4: How should we measure social-economy organizations when traditional methods fail to capture the richness of social and economic objectives; what is the impact of social-economy activity within the larger economy?
- Cluster 5: What have governments done; what should they do — and not do — regarding the social economy?



*Centre for the  
Study of  
Co-operatives  
(Saskatoon)*

*Community-  
University  
Institute for  
Social Research  
(Saskatoon)*

*Winnipeg Inner  
City Research  
Alliance*

*Community  
Economic and  
Social  
Development  
Program  
(Sault Ste. Marie)*

# How Will the Research Proceed?

- participatory action research methodologies
  - comparative institutional (ethnography) analyses, strategic cases
  - deliberative dialogue
- surveys
  - comparative, cross-sectional
- geographic information systems (GIS)
  - map and analyse underlying patterns



*Centre for the  
Study of  
Co-operatives  
(Saskatoon)*

*Community-  
University  
Institute for  
Social Research  
(Saskatoon)*

*Winnipeg Inner  
City Research  
Alliance*

*Community  
Economic and  
Social  
Development  
Program  
(Sault Ste. Marie)*

# Mapping the Social Economy in our Region

- National focus on mapping
  - Issues
    - definitions
    - data collection procedures/challenges
  - What information do you require?
  - For what purpose would you use information about the social economy in our region?
  - How should our node proceed with mapping?
-



*Centre for the  
Study of  
Co-operatives  
(Saskatoon)*

*Community-  
University  
Institute for  
Social Research  
(Saskatoon)*

*Winnipeg Inner  
City Research  
Alliance*

*Community  
Economic and  
Social  
Development  
Program  
(Sault Ste. Marie)*

# Our Morning's Work

- introductions and sharing of research interests
  - process
    - communication strategies
    - identify community co-lead for cluster
  - specific planning regarding
    - research question(s) to investigate
    - objectives and timing of research
    - methodology for data collection
-



*Centre for the  
Study of  
Co-operatives  
(Saskatoon)*

*Community-  
University  
Institute for  
Social Research  
(Saskatoon)*

*Winnipeg Inner  
City Research  
Alliance*

*Community  
Economic and  
Social  
Development  
Program  
(Sault Ste. Marie)*

# Logistics

- meeting rooms
  - refreshments
  - wrap-up
  - lunch
-